

CHARACTER OPTIONS (New Malden)

Development Stage: Mock-Up ☒ Submission ☐ Pre-Production Sample ☐

Approved ☒

Item No: 07996

Product Name (Indicate Pack, Product etc): Magical Garden

Art No: 06510

Date: 14 Feb 23

Vers: VI


Material: 100 gsm glossy paper

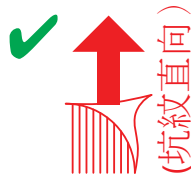
Colours: C M Y K 4C

Finishing: UV

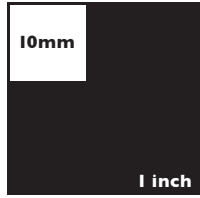
Component: IM

Dimensions: W240xH170MM x 2 pages





(坑紋直向)






Front 1

An invention licenced from Assim Ishaque & family  
Patented GB2531575, Design Reg. 4038662

**WARNING! CHOKING HAZARD.**

Not suitable for children under 36 months. Choking hazard (small parts). Please remove all packaging/instructions attachments before giving this product to a child. Please use discretion if making purchases for children younger than the age recommended on this package. Product specifications, colour and contents may vary from those illustrated.

**IMPORTANT:** Please retain packaging/instructions and purchase details for future reference as they contain important information.



Art No: 06510-010323-VI

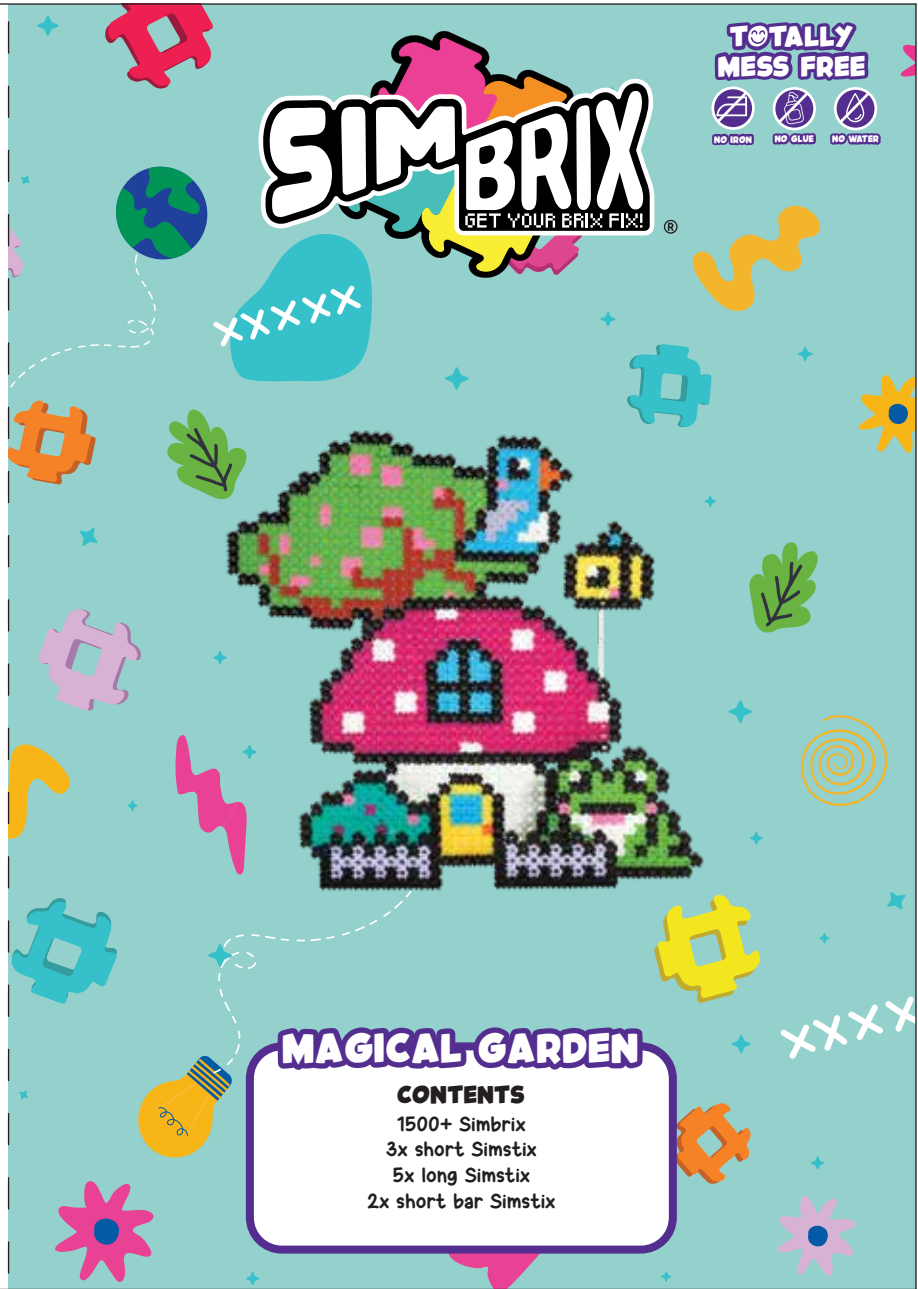
Item: Simbrix Magical Garden  
Item Number: 07996  
Age Grade: 5 Years Plus



Manufactured by:  
Character Options Ltd.,  
Lees Brook Mill, Lees Road,  
Lees, Oldham OL4 5JL, UK.  
Customer Service Department  
Tel No: **0161 633 9808**  
Made in China

[www.character-online.co.uk](http://www.character-online.co.uk)

**PROXY A/S**  
Gothersgade 14, 3<sup>rd</sup> Floor DK-1123  
Copenhagen K, Denmark  
[www.proxy.toys](http://www.proxy.toys)



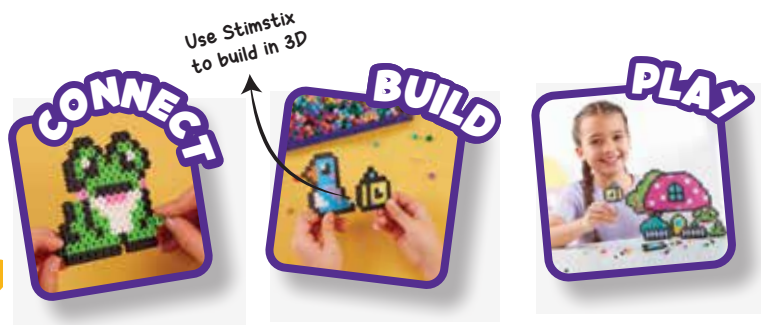
## INSTRUCTIONS



### MAGICAL GARDEN

SIMBRIX is the fun easy to build creative 'Brix' system you can use again and again. Each set is made up of a number of 'Small builds' where you create the individual parts of the larger 3D display.

Follow the easy 'how to' guide and steps below to create your SIMBRIX Set.



Follow templates in the booklet to assemble designs.

Build designs in 3D by slotting Stimtix into the centre of a Simbrix and connecting to another design.

Follow the 3D build instructions in the booklet to make 3D displays or create your very own.

### CONNECTING-SIMBRIX

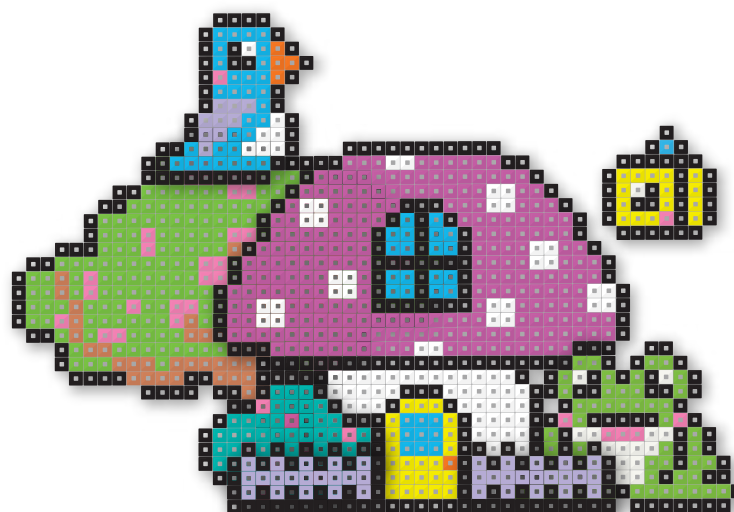


**CORRECT**  
Make sure each Simbrix is slotted in the same way.



**INCORRECT**  
If a Simbrix is slotted in a different orientation, designs may be impossible to complete.

## FINAL BUILD



### FRONT

Picket Fencex2

### FRONT-MIDDLE

Frog  
Rosebush

### BACK-MIDDLE

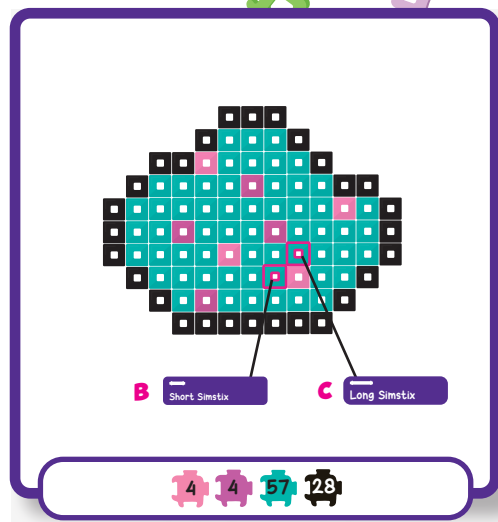
Bird  
Bee  
Toadstool

### BACK

Blossom Tree

Scan the QR code for video tutorials



**ROSEBUSH**

## BUILD KEY & EASY STEPS

1

### BUILD EACH PART !

Follow the build template for each design, to select the right number of BRIX and build up the design.

(Build guide found on the NEXT PAGE)

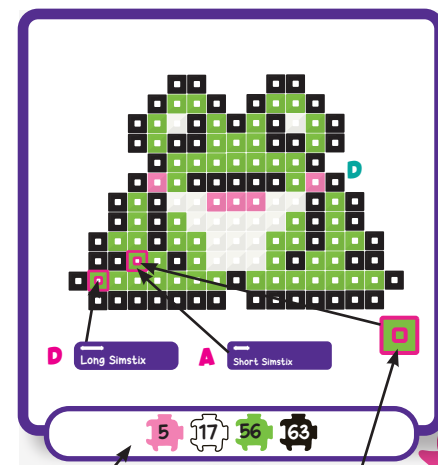
Once a build is complete set it aside and move onto another design.

**NOTE:** If you get stuck you can use the QR code below to download full size templates



Scan the QR code to visit the Simbrix website for ideas, tutorials and full-size printable templates

### EXAMPLE BUILD TEMPLATE

**FROG**

Number & colour of Brix required for the design.

SIMSTIX location points are outlines with a colour and a letter for assembly.

2

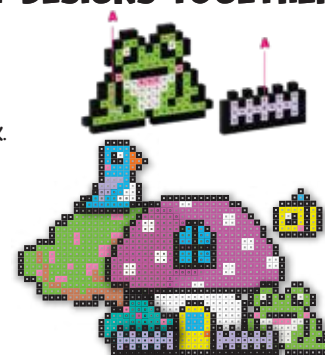
### USE SIMSTIX TO CONNECT DESIGNS TOGETHER !

Build 3D displays using the SIMSTIX supplied. Each build template shows the location and size of the SIMSTIX needed to connect the designs together. Each location is marked with a letter to match one end of a SIMSTIX.

For example push one end of a SIMSTIX into brix labelled C and attach the other end into the other build labelled C.

Use the image on the final build page to see placement of the 3D Build.

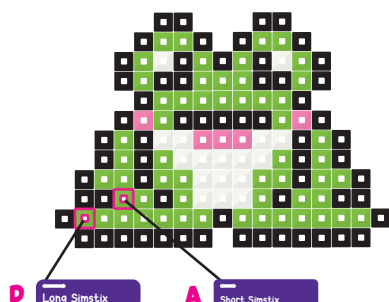
Once each SIMSTIX is attached the design can stand and be displayed.



Short Simstix

Long Simstix

Short Bar Simstix

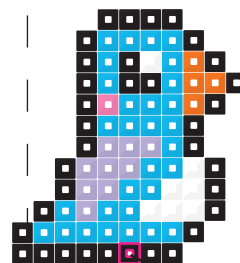


D Long Simstix

A Short Simstix

5 17 56 63

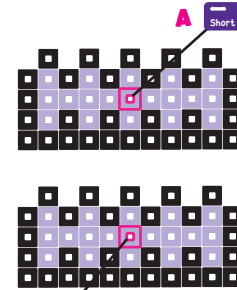
FROG



H Short Simstix

9 4 1 30 7 135

BIRD

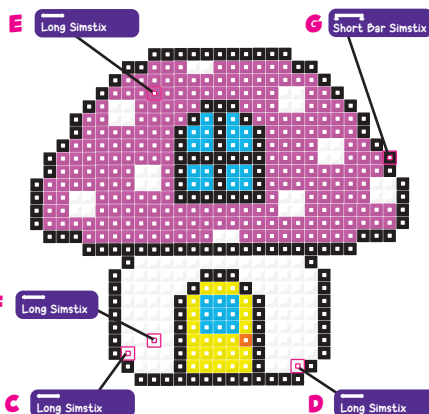


B Short Simstix

A Short Simstix

160 38

PICKET FENCE



E Long Simstix

G Short Bar Simstix

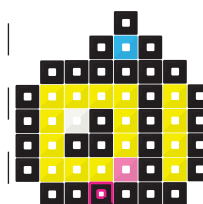
F Long Simstix

C Long Simstix

D Long Simstix

113 27 146 224 23 1

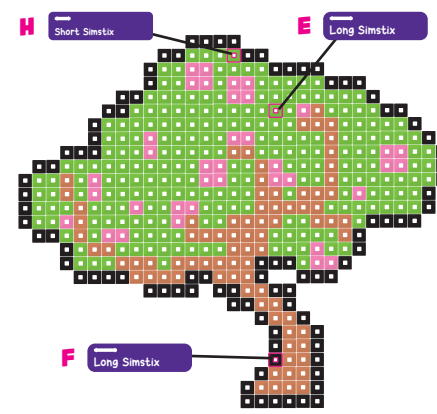
TOADSTOOL



G Short Bar Simstix

15 1 1 1 130

BEE



H Short Simstix

E Long Simstix

F Long Simstix

82 227 37 195

BLOSSOM TREE



Scan the QR code to visit the Simbrix website for ideas, tutorials and full-size printable templates